



Helping
People
Succeed

IMPACT REPORT



2024-2025

Building Successful Families and Futures One Life at a Time.

Empower. Assess. Facilitate. Support

Helping People Succeed (HPS) is a well-established organization with over 60 years of serving the Treasure Coast.

With 160 dedicated staff members, we serve more than 7,000 people annually across three counties, with a budget exceeding \$8 million.

Our impact is powered by our specialized service areas working together to support individuals across all stages of life.

- **Baby Steps:** provides programming for infants, toddlers, preschoolers and their caregivers
- **Healthy Families:** is a child abuse prevention program
- **Behavioral Health:** offers mental health and case management services to youth and adults
- **Youth Programs:** provide after school and summer experiences for youth with behavioral, developmental, or mental health needs
- **Successful Futures:** supports adults and teens with disabilities through employment coaching and an Adult Day program



Helping People Succeed transforms lives by realizing potential, creating hope and building futures through education, counseling, training and employment.

What a year it has been for Helping People Succeed – a year of growth, evolution, and renewed commitment to serving our communities with excellence.

When I joined the Helping People Succeed family as its new CEO on November 12, 2024, I had an idea that I was becoming a part of a special place, but I definitely did not fully realize the depth and breadth of the impact this organization makes in the communities we serve or the powerful collaborations and supporters who help make our mission go round.

After my first year in this seat, I could not be prouder to share our impact with you and more humbled in thanking you for your support, your partnership, and your trust in our team of professionals to serve the thousands of families and individuals that we do.

As you review this report of our impact and of our thanks, I hope you will feel the energy, the passion, and the renewed commitment we have to not just ensuring that we continue to be a trusted resource in the community, but to evolving and innovating our services to respond to the ever-changing needs of those communities.

Proud to be in this work together.

A Note from Kara Stimpson, CEO



Dedicated BOARD OF DIRECTORS



Tom Campenni
Chairperson



Artie Manfredi
Vice Chairperson



Marian Vitale
Secretary



Dale Forbes
Treasurer



Allen Herskowitz



Bonney Johnson



Rob Whitlach



Claire Y. Nash,
PH.D., CPA



Jill Marasa



Rosie Portera



Marco Violante



David Dees



Leah Suarez



Carolyn Timmann
Honorary Board

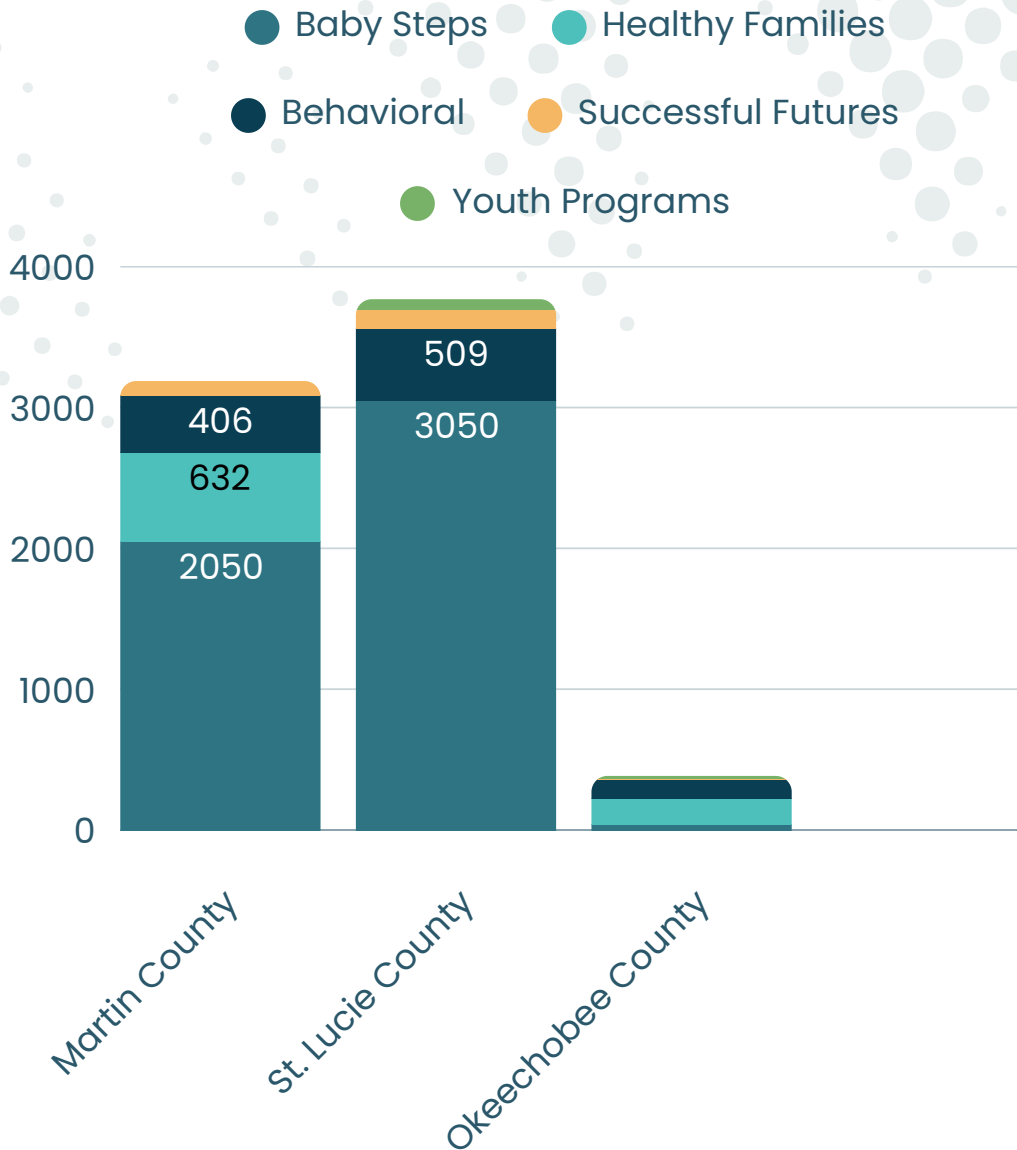
Message From Chairperson Tom Campenni

As Board Chair for Helping People Succeed, it has been my honor to be part of an organization that assists our clients in receiving services to allow them to succeed in life. Our devoted staff in the tri-county service area is critical to that success. Without our donors and funders none of the work we do would be possible. I want to thank the volunteers, board members, donors, funders, and staff for our success in 2024-2025.

Service Areas:

Numbers Served Per County
Per Service Line

- Martin
- St. Lucie
- Okeechobee



3,188

Participants in
Martin County

3,769

Participants in
St. Lucie County

384

Participants in
Okeechobee County

67

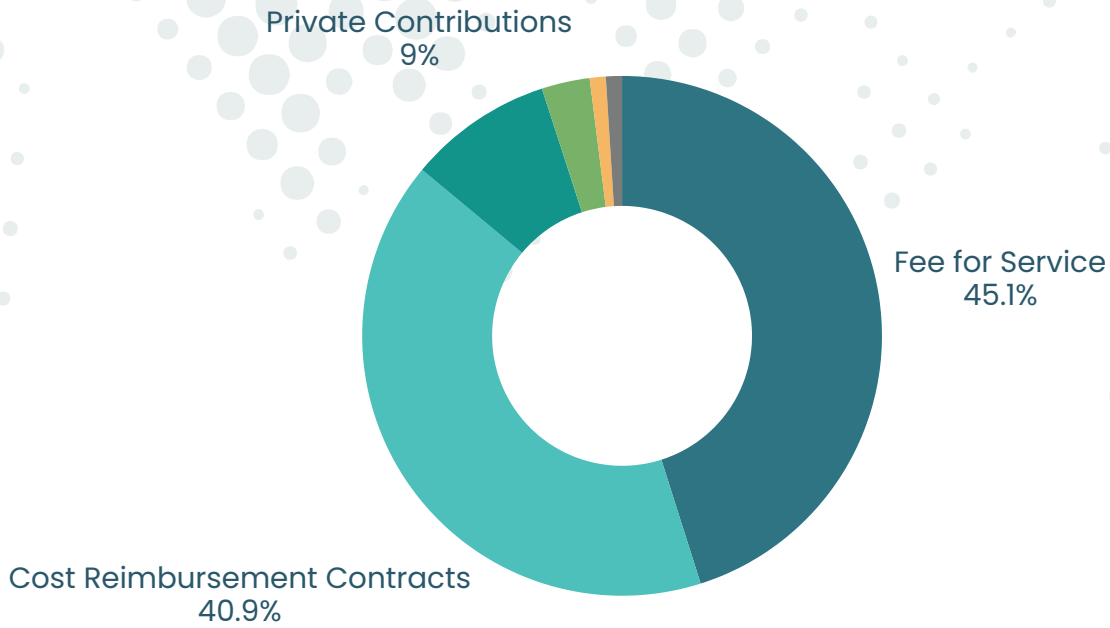
Behavioral
Participants in
Indian River County



Across the Treasure Coast, Helping People Succeed serves more than 7,000 children, families, and adults each year through a dedicated team committed to meeting people where they are and supporting lasting growth.

Our impact is strengthened through close collaboration with schools, healthcare providers, and community agencies across our tri-county service area. Together, we create coordinated pathways of care that turn collective effort into real success for the people we serve.

Sources of Support 2024-2025



Philanthropic Gifts: \$776,343

We are deeply grateful to our donors and community partners whose generosity sustains the mission of Helping People Succeed. Every dollar invested plays a vital role in supporting the individuals and families we serve: strengthening programs, expanding access to care, and ensuring no one falls through the cracks. Your support, at every level, allows us to respond to real needs with compassion and purpose. Together, we are creating meaningful change and helping people succeed today and into the future.

85%

Program
Allocations
2024-2025

9%

Administration
Allocation

163

First-Time
Donors
2024-2025

7,408 \$8,709,385

Individuals and Families Served
Across the Treasure Coast

Powered our mission in 2024–2025, through a
diverse range of funding sources.

Major Donors:

\$25,000+

- *Community Foundation Martin – St. Lucie*
- *Community Foundation Palm Beach and Martin Counties*
- *Bill Crandall*
- *Hobe Sound Community Chest*
- *Bill Lichtenberger*
- *Loblolly Community Foundation*
- *Marmot Foundation*
- *William and Helen Thomas Charitable Trust*

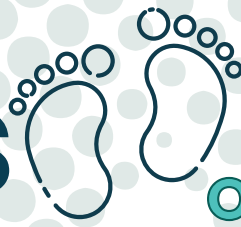
\$10,000–\$24,999

- *Booth Foundation*
- *Mary Kay Buckridge*
- *Thomas and Polly Campenni*
- *Dale Forbes*
- *Lichtenberger Family Charitable Fund*
- *Peter and Joy Funston*
- *PNC Foundation*
- *Rulison Family Foundation*
- *Truist Bank*
- *United Way of Martin County*
- *Jeanine Webster*
- *Bob Weissman*

\$5,000–\$9,999

- *E. W. Consultants*
- *Bob Crandall & Ellyn Stevenson*
- *Marlene Filer*
- *Wayne and Debra Freihofer*
- *Kathy Garlington*
- *Allen Herskowitz*
- *Ruth Mead*
- *James and Jayne Mondello*
- *William J. Motto Fund*
- *Seacoast National Bank*
- *Silvester Foundation*
- *Treasure Coast Photography*

Baby steps



Martin: 3,050
St. Lucie: 2,050
Okeechobee: 41

Specialty Services

Infancy:

- Baby Connections
- Infant Massage
- Happiest Baby

Behavioral:

- Help Me Behave
- Children's Behavioral Support

Social Communication

- Music & Movement
- Play Groups

Developmental:

- Development Intervention
- ASQ Universal Screening



1,244

**Parents of newborns
received a developmental visit,
providing critical guidance on
their child's growth, development,
and early learning.**

*All programs are provided
FREE of charge to families
in Martin, St. Lucie &
Okeechobee counties,
serving children from birth
to 5 years old.*

Success Story

Rafaela was referred to the Developmental Intervention program after ASQ results revealed significant gross motor delays. At the start, she was fearful of being on the floor and could only stand on her tiptoes while supported by her mother.

With the support of a specialist and guided play, Rafaela gained confidence and began exploring the floor on her own. Today, she stands independently, takes steps while holding furniture, and her mother is thrilled by her progress and the tools gained through the program.



Healthy families

Martin-Okeechobee

Maria is a recent graduate of the Healthy Families program whose journey reflects the lasting impact of early support and guidance. Since enrolling in October 2021, Maria has secured full-time employment with benefits, earned her legal driving permit, and gained the independence to commute and support coworkers. She also became a homeowner, purchasing a home for her blind mother, whom she continues to care for. With support from her Healthy Families home visitor, Maria was connected to critical community resources including medical care, employment assistance, education, early learning, legal services, and basic needs support. Today, she remains a dedicated mother to her two children and is preparing to further her education through adult learning classes — demonstrating stability, growth, and long-term family success made possible through Healthy Families.

We Served:

377

families

816

children



2,814

provided referrals for
education, housing,
employment, childcare, etc.

99.4%

Successfully Completed
Treatment

100%

of children successfully
completed the program
were free of verified
findings of abuse or neglect
withing 12 months of
program completion.

Healthy Families serves families who are experiencing significant and complex challenges such as childhood trauma, financial struggles, mental illness, domestic violence, and substance misuse that place their children at greater risk of abuse and neglect.



Behavioral health services

1,119

Individuals Served During
Last Fiscal Calendar.

90%

Successfully Completed
Treatment

94%

of children with serious
emotional disturbances
(SED) demonstrated
improved function.

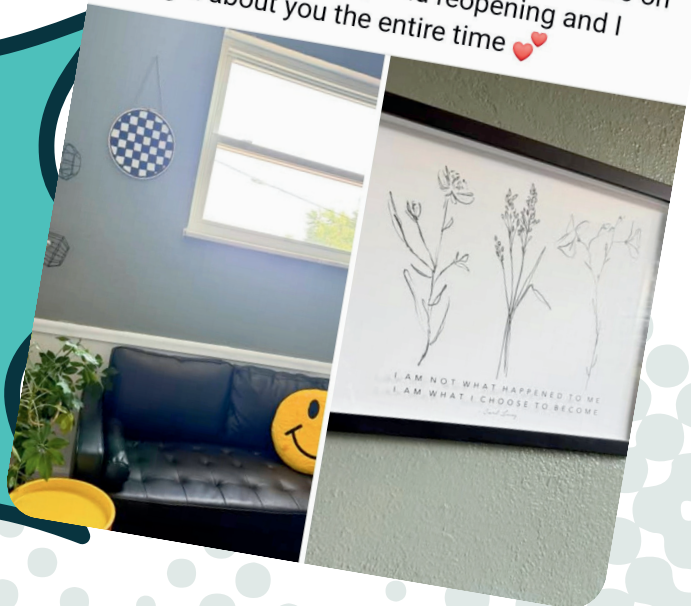
Therapists don't always get to see the long-term impact of their work, but Christine Murphy recently experienced a powerful full-circle moment. A former client she worked with at age 13 reached out years later to share that Christine inspired her to become a therapist and open her own practice. That brief message captured the profound, lasting influence of compassionate care and how one therapist's support can shape a life far into the future.

Among adults with severe and persistent mental illnesses, **96%** showed improvement in their level of functioning, far exceeding the target benchmark of 65%. This reflects strong engagement, effective treatment planning, and meaningful clinical progress within a highly complex population.

Specialty Services

- **A.R.T.**
- **Client Centered Therapy**
- **CBT**
- **EMDR**
- **High Fidelity Wraparound Case Management**

thank you for the lifelong impact you had on 13 year old me. I was putting the final touches on my office before our grand reopening and I thought about you the entire time ❤️



Youth programs

St. Lucie County:
youth served

73

Okeechobee County:
youth served

15

100%

of the children in our afterschool and summer programs have a diagnosed need or identified need for behavioral or mental-health support.



Our programs serve the children who need us most. Every single participant requires behavioral, developmental, or mental-health accommodations, yet they are fully included in enriching, community-based environments where they can learn, socialize, and thrive. This highlights both the level of need in our community and the unique capacity of Helping People Succeed to provide wraparound, trauma-informed support that many traditional programs cannot.

90%

of children in our programs demonstrated measurable gains in academic progress - showing that when children receive the right support, they not only participate, they thrive.

A recently relocated military family shared that HPS provided their children with stability, safety, and a true sense of belonging during a difficult transition caring for an ill parent. Another participant, Andrea, who once struggled to engage socially, has blossomed into an active, confident leader - earning "A" Honor Roll and forming meaningful friendships through activities like "Feelings in a Ball." Together, these stories show how our programs create both emotional growth and academic success for the youth we serve.



Successful futures

\$93,000

**WORTH OF SERVICES GIVEN BACK
TO OUR COMMUNITY PARTNERS!**

2,825

Community Connections
Volunteer Hours at other
organizations throughout
the Treasure Coast.

57

Adults with disabilities
have found and
maintained employment.

244

Participants across
Martin, St. Lucie, and
Okeechobee.

**55 Employment Locations
Across the Treasure Coast!!!**



The things my son learns while attending HPS are generalizing at home. He sees things he can help with and does them without asking. His socialization skills have improved so much. I am so happy with what he is accomplishing with HPS. His progress is amazing. Thank you for what you all are doing.

Kay F., Parent of Community Connections and Follow-Along Participant



community partners
we thank you
for your continued support.

Give Today!



**HOBE SOUND
COMMUNITY
CHEST, INC.**



**THE
COMMUNITY
FOUNDATION**

**MARTIN
ST. LUCIE**



**FLORIDA DEPARTMENT
OF CHILDREN AND FAMILIES**



agency for persons with disabilities
State of Florida



**FLORIDA DEPARTMENT OF
EDUCATION**
fldoe.org



FLORIDA KidCare



**Children's Services Council
of Okeechobee County**



WILLIAM & HELEN THOMAS CHARITABLE TRUST



**United Way of
St. Lucie & Okeechobee**



United Way of Martin County

Let's Stay Connected!
Follow Us:



@HPSFL



@Helping.People.Succeed



**Helping
People
Succeed**

Martin Office:

**1601 NE Success Drive
Jensen Beach, FL 34957**

Okeechobee Office:

**208 N Parrott Ave
Okeechobee, FL 34972**

Phone: 772-320-0770

Email: info@hpsfl.org

Website: www.hpsfl.org